

Lobophyllia/Symphyllia

Class Anthozoa, Order Scleractinia, Family Mussidea, Genera *Lobophyllia* and *Symphyllia*



Common names: open brain coral, lobed brain coral

Natural origin: Indo-Pacific

Sensitivity (Level 1 to 2): Sensitivity depends somewhat on species, but most are quite tolerant and forgiving when healthy and well fed.

Feeding: These corals have strong prey capture ability. They typically have considerably larger polyp mouths and can take larger food than can the

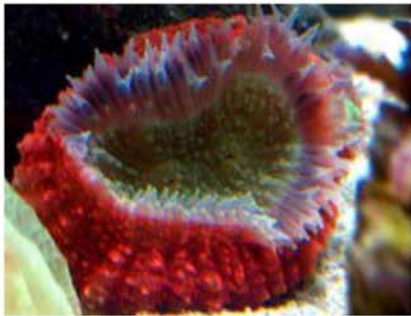
Blastomussa/Micromussa/Acanthastrea species of the same family. They should be fed at night since this is often the only time they will extend their feeder tentacles.

Lighting (Level 5 to 8): They can adapt to a range of lighting conditions but tend to prefer more intense light. As always, to prevent bleaching, be careful to properly acclimate the coral to new lighting conditions.

Water flow: Moderate water flow is preferred.

Placement: These corals are not aggressive. Even so, they can expand quite a bit and so need plenty of room. Please place them safely away from aggressive corals.

General: Feeding tentacles are usually relatively small and only come out at night. Care should be taken to make sure the coral gets enough food. Slow tissue recession could be a sign of starvation. Regular night-time target feeding can help.



middle photo by Robert Pacheco
bottom photo by Leonard Ho